

TimeCraft

GUI Management Utility for Synchronization Network Elements

TimeCraft is an easy-to-use tool that provides a Graphical User Interface (GUI) to manage individual synchronization devices. TimeCraft reduces the complexity of using TL1 or CLI commands by providing intuitive displays of the equipment management capabilities. The TimeCraft interface allows the operator to supervise and control a synchronization network element through icons and simple point and click operations. It provides rich graphical interfaces consistent with generic Microsoft Windows® applications.

TimeCraft translates management interface commands to enable limited FCAPS capability (Fault, Configuration, Accounting/Inventory, Performance and Security) at the equipment level. Network administrators and technicians are more efficient performing activities such as remote firmware upgrades, provisioning to the port level, event-driven fault management, physical and logical configuration management, and performance and security management. TimeCraft manages several Microsemi synchronization platforms, supporting both local and remote management.

Microsemi's TimeCraft is an easy-to-use application that will eliminate the frustration of using complex transaction language or command line interfaces.

KEY FEATURES

- Graphical User Interface for T11 commands
- Local and remote management

KEY BENEFITS

- Simplifies equipment user interface for more efficient management

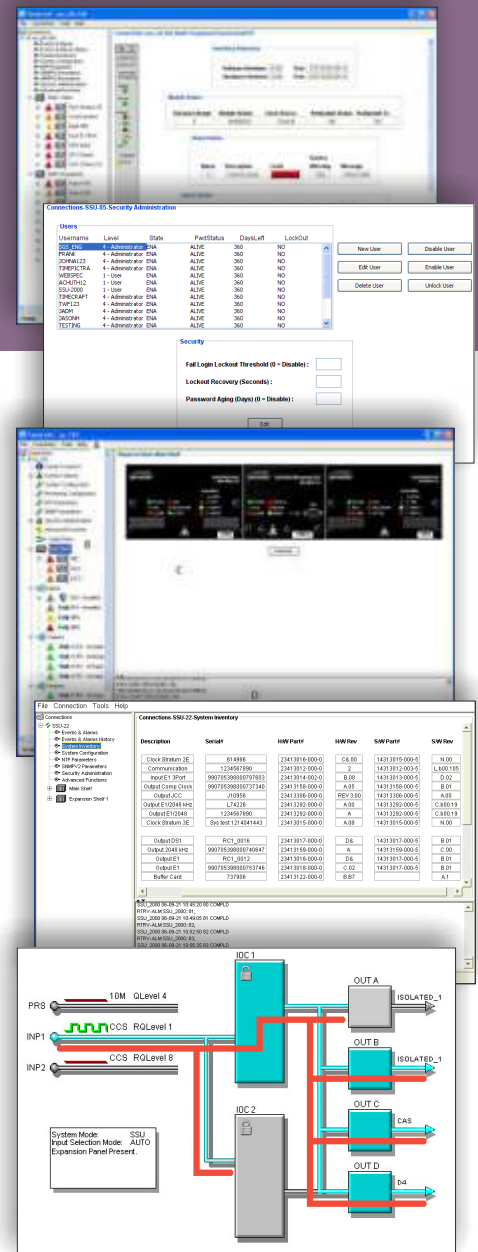
Recommended Minimal Platform Requirements

Operating Systems

- Windows 2000 SP1 or later
- Windows XP
- Windows 7 (32 or 64bit)

Hardware

- 1 GHz Pentium Processor
- 512 MB RAM
- 1 GB Free Disk Space
- 8x CD-ROM drive
- SVGA display (minimum screen resolution set at 1280 x 1024)



Supported Microsemi Systems

TimeCraft supports the following network elements:

- TimeProvider® 1000/1100
- SSU 2000 / SSU 2000e
- TimeHub® 5500
- TimeSource® 3000/3500
- TimeSource® 3100/3600