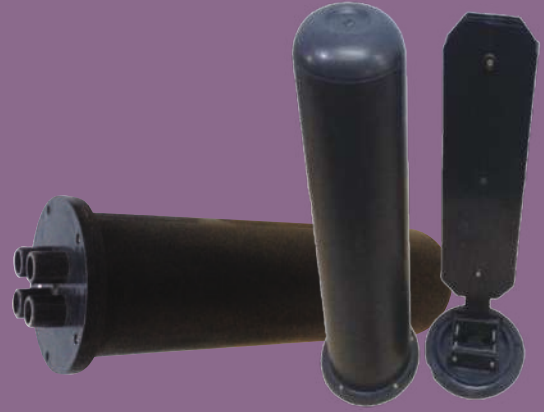


Dome Type Joint Enclosure (Screw Opening) - BR Type



The Dome Type Joint Enclosure (Screw Opening) - BR Type is used to connect two or more optical fiber cables. The fibers from different cables are fusion spliced and kept safe inside the splice organizer provided inside the OFC joint closure. The closure can either be buried in the ground (in manholes) or hung on a pole in the case of aerial cable. There are straight joint closures and branch joint closures available for armored or unarmored optical fiber cables. These joint closures are designed to be sufficiently strong and robust to resist environmental and weather effects. Once assembled and heat-shrunk, they are completely moisture, dust, and insect-free.

The Dome Type Joint Enclosure (Screw Opening)-BR Type is a high-quality enclosure designed to provide a secure and safe environment for cable joints. Its unique screw opening dome design allows for easy access to cable connections, making installation and maintenance a breeze.

The Dome Type Joint Enclosure (Screw Opening) - BR Type typically comprises of a molded shell pipe that has one end closed and an end cap with parallel ports and an oval port for cable entry and exit. The end cap contains a base plate or main plate that holds the sheath clamp, FRP holder, and cassettes. Cable entry ports are provided on the top of the end cap for cable entry. With its high-quality construction, versatile design, and reliable performance, the Dome Type Joint Enclosure (Screw Opening)-BR Type is the ideal choice for protecting and managing cable joints in a wide range of applications.

Technical Specifications

Material	ABS Plastic
Color	Black
Cable Entry	BR Type-3
Maximum Cable Diameter	25mm
Maximum Number of Cables	4
Cable Connection Type	Screw-on terminal block
Operating Temperature	-40°C to +65°C
Storage Temperature	-40°C to +85°C

KEY FEATURES & BENEFITS

- Suitable for cable up to 48 fibers, making it suitable for a wide range of applications.
- Compatible with all types of OFC (Optical Fiber Cable), providing a versatile solution for cable joint protection and management.
- Multi-entry joint closure allows for multiple cables to be connected, reducing the need for multiple enclosures and simplifying installation.
- Available for straight and branch joints, providing flexibility in cable routing and connections.
- Provides reliable protection against water and moisture, ensuring that the cable joints remain secure and functional even in harsh weather conditions.
- Made from high-quality materials for maximum durability and strength.
- Unique screw opening dome design for easy access to cable connections and simplifying maintenance and repair work.
- Can accommodate up to 4 cables with a maximum diameter of 25mm.
- Includes a sealing gasket to provide additional protection against water and dust.
- Includes a sealing gasket to provide additional protection against water and dust, ensuring that the cable connections remain protected and secure.

KEY APPLICATIONS

- Telecommunications
- Power distribution
- Railway signaling systems
- Security systems
- Oil and gas industries