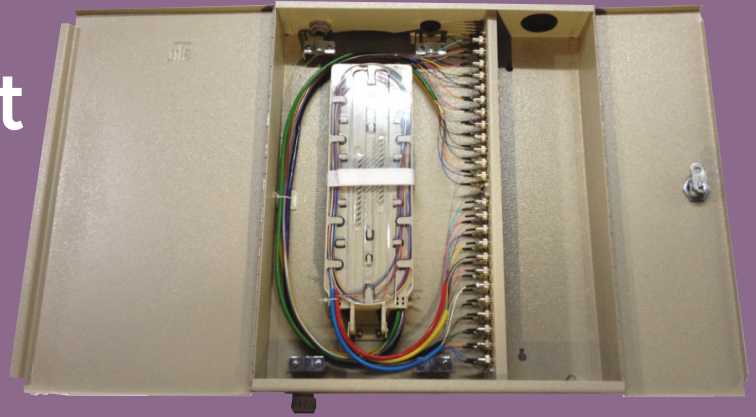


Fiber Management System 48F-Wall Mount



Introducing the Fiber Management System 48F-Wall Mount from Savitri Telecom Services, a reliable and efficient solution for managing optical fiber connections. This Fiber Management System (FMS) is designed to manage optical fiber connections from the outside of the fiber rack to the fiber routers using splicing technology. It has fiber in and fiber out ports and is suitable for indoor/outdoor (wall/pole mounted) applications.

The Fiber Management System 48F-Wall Mount accommodates up to 48 fibers and pigtails, such as FC/PC, SC/PC, ST/PC, FC/APC, SC/APC, etc. It features a single/double door access with suitable lock and keys, providing maximum protection of optical components. The shelf inside the unit has an excess length of pigtail storage, maintaining the bend radius of the pigtail. It also has a reliable protection appliance of fixing, striping, and earthing for optical fiber cables.

This product is known for its accurate functioning and reliable service life, delivering high performance and stability. It includes provisions for cable termination, splicing distribution, and cross-connection, providing a total solution for managing fiber optic cables.

KEY APPLICATIONS

- Backbone, Telecommunications Room, Main Distribution Room, Outside Plant, Mining & Military, Road & Rail.
- Industrial Uses, Transmission boxes for substation, CCTV & FTTH Applications, Factory, and automation applications.

KEY FEATURES

- Direct wall mountable unit suitable for indoor/outdoor (wall/pole mounted) application, available with grounding nuts.
- Accommodates up to 48 fibers and pigtails like FC/PC, SC/PC, ST/PC, FC/APC, SC/APC, etc.
- Single/double door access with suitable lock and keys.
- Excess length of pigtail storage provided inside the shelf to maintain the bend radius of the pigtail.
- Provides maximum protection of optical components and has a reliable protection appliance of fixing, striping, and earthing for optical fiber cables.
- Known for its accurate functioning and reliable service life.

KEY FEATURES

- Designed for terminating optical fiber at the outside of communications rooms or for any outdoor application.
- Includes provisions for cable termination, splicing distribution, and cross-connection.
- Features a systematic & reliable outdoor design for effective installation and maintenance.
- Provides a total solution for managing fiber optic cables.

Technical Specifications

Material	CRCA steel with 7tank process powder coating
Color	RAL 7035/Black
Length (mm)	390
Width (mm)	450
Depth (mm)	100
Weight (Kg)	9.6
Maximum capacity of fiber	48
Number of splice tray	4
Size of splice tray (LxWxH)	190x100x15
Fiber capacity of each splice tray	12
No of cable entry ports	4
Fiber components standard	Telecordia GR-326

