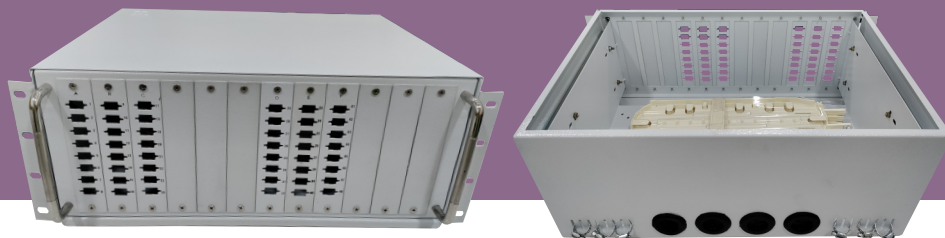


# Fiber Management System 96F- Rack Mount



A Fiber Management System (FMS) manages optical fiber connections from the outside of the fiber rack to the fiber routers. Fiber-optic cable duct containing many fibers comes from far end sites and terminates on the FMS using splicing technology. FMS has fiber in and fiber out ports. From the fiber out port, the fiber patch will go to the fiber optics-based router to manage fiber networks. Savitri manufactures a wide range of Rack Mount Fiber Management Systems that are fully compatible with industry-grade fiber adaptors for 12/24F, 48F, and 96F. The FMS consists of two key components that combine to provide a comprehensive approach to fiber management: Fiber Termination & Fiber Distribution within the same frame assembly and delivers high performance & stability. It is a high-density multifunctional unit designed for specific applications & environments.

## Key Applications

- Backbone, Telecommunications Room, Main Distribution Room, Outside Plant, Mining & Military, Road & Rail.
- Industrial Uses, Transmission boxes for substation, CCTV & FTTH Applications, Factory and automation applications.

## KEY FEATURES

- Fixed or sliding-type rack mount FMS made of high-quality CRCA steel.
- An assortment of standard coupling plates.
- Suitable for any electronic equipment rack.
- Accommodates up to 96F (simplex/duplex) & pigtails like FCPC, SCPC, LCPC, STPC, E2000PC, FCAPC, SCAPC, LCAPC, E2000APC, etc.
- Individual and modular coupler plates with the "GLIDE" mounting system.
- This FMS provides maximum protection of optical components.
- It is also available in 2U (24 fibers), 3U (48 fibers), and 4U (96 fiber) sizes.
- An excess length of pigtail storage is provided inside the shelf to maintain the bend radius of the pigtail.
- Accurate functioning and reliable service life with 100% testing for mechanical & optical characteristics.

## KEY BENEFITS

- Reduces inventory.
- Provides easy rack front access to the rear compartment and jumpers.
- The main frame is fixed to the rack & only the inside tray will extend outside, which improves the stability of the system. Conserves space.
- Available in all major connector styles.
- Provides a total solution for managing fiber optic cable.

## TECHNICAL SPECIFICATIONS

Material	CRCA steel with 7tank process powder coating
Color	RAL 7035/Black, etc
Depth (mm)	442
Width (mm)	305
Size (mm)	180 (4U)
Weight (Kg)	10
Maximum capacity of fiber	96
Number of splice tray	4
Size of splice tray (LxWxH)	332x100x12
Fiber capacity of each splice tray	24
Fiber components standard	Telecordia GR-326